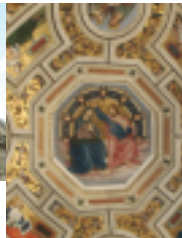


## GLOSSARY

AEDICULE	Niche flanked by columns, capped with a <b>PEDIMENT</b>
APSE	Area terminating an axis, usually housing an altar
COFFERING	Recessed panels to decorate or reduce the weight of the ceiling
CORNICE	Ornamental molding at top of wall, below ceiling; see <b>ENTABLATURE</b>
CROSSING	Area in a church where the axis the of <b>NAVE</b> crosses the <b>TRANSEPT</b>
CRUCIFORM	Cross-shaped; a <b>LATIN CROSS</b> has a long vertical axis, with cross-arm above midpoint; a <b>GREEK CROSS</b> has four arms of equal length
DRUM	Wall supporting a dome, usually cylindrical, often windowed
ENTABLATURE	Sectioned beam spanning columns: the architrave rests directly on the capitals, in the middle is the frieze, and the <b>CORNICE</b> is topmost
EXEDRA	Large semicircular recess or independent wall, with built-in bench
GRISAILLE	Monochrome painting; technically shades of gray
GROTESQUE	Fanciful ornamental motif, named for grottoes where the classical decoration was discovered
LUNETTE	Semi-circular area of wall or ceiling framed by an arch or <b>VAULT</b>
NAVE	Central aisle of a church; side aisles sometimes considered part of nave
PEDIMENT	Triangular gable-end of a roof; also, crown of a window or door
PENDENTIVE	Curved wall surface transitioning between a dome and the squared support piers
RELIEF	Carving raised above background plane; <b>BAS</b> or <b>LOW RELIEF</b> protrudes slightly, compared to deeply carved <b>HIGH RELIEF</b>
TRANSEPT	Transverse arm of church, crosses <b>NAVE</b> at right angles, creating a <b>CRUCIFORM</b> plan
TROMPE L'OEIL	Literally, "deceive the eye"; illusionary painting technique
TYMPANUM	Panel framed by <b>PEDIMENT</b> , often decorated
VAULT	Arched ceiling, usually masonry; earliest were <b>BARREL VAULTS</b> ; Lombard/Gothic introduced <b>RIB VAULTS</b>



[www.JanesSmartArt.com](http://www.JanesSmartArt.com)

We love to hear from our customers! Please tell us about your experience with this guide. Register on-line for product news, individual Slices of History, Jane's Favorite Places & Things, and more. And check our website to learn about other Jane's Smart Art Guides™ titles.

Sound Engineering: Symphonic Sound Recording, Springfield, NJ

The publisher has endeavored to verify the facts contained in this guide, and to ensure that the directions are easily followed. If you find an error, please let us know at [MJM@JanesSmartArt.com](mailto:MJM@JanesSmartArt.com) so that we can correct it in the next release. The publisher is not responsible for unexpected site closings, the absence of artworks, or the inaccessibility of areas included on the tour. We recommend that you confirm opening and closing times in advance. Please be aware of your surroundings at all times, as the publisher cannot be held liable for any injury or loss that may occur while listening to this guided tour.

© Copyright 2006 Context Audio Guides, LLC. All rights reserved.



Jane's  
SMART ART GUIDES™  
for the intellectually-curious, independent traveler



# STA. MARIA DEL POPOLO

AUDIO GUIDE TO SANTA MARIA DEL POPOLO IN ROME  
AND ITS REMARKABLE ART TREASURES

## HOW TO USE THIS GUIDE

In less than 20 minutes, the Slice of History portion of the Guide (Tracks 1-5/Disc 1) will fill gaps in your knowledge, to heighten your appreciation of what you'll see when you tour the church with me. Enjoy it in advance of your visit to Sta. Maria del Popolo...before leaving home, on the plane, or over a coffee or a glass of wine in Rome.

You might take the tour of the Piazza del Popolo beforehand, too (17 minutes; Tracks 6-8/Disc 1). The area is brightly illuminated at night.

Once inside the church, the complete tour will take about 1 hour and 20 minutes. Of course you can customize your tour to your own schedule and interest. Do be aware that Sta. Maria del Popolo is closed for a few hours each afternoon.

This booklet includes a Floor Plan keyed to the Track List, to keep you from getting lost, a Glossary to clarify unfamiliar terms, and a Timeline to provide historical perspective. Consider carrying a pair of light binoculars, to help you view artistic detail.

It is my hope that this audio guide will enrich your experience of this remarkable art site. It is certainly my pleasure to accompany you, to delve, together, into the essence of Sta. Maria del Popolo!

Jane



## DISC 1

### SLICE OF HISTORY

#### Pre-Tour Context Guide

1. Origins of Sta. Maria del Popolo	4:47
2. Renaissance – Della Rovere Popes	3:15
3. Martin Luther – Augustinian Monk	2:18
4. Lombard Architectural Style	1:57
5. Historical Events at Church & Piazza	5:49
<b>Total</b>	<b>18:06</b>

### GUIDE TO EXTERIOR

6. Piazza del Popolo (Valadier et. al.)	9:25
7. Porta del Popolo (Bernini)	2:31
8. Façade (Pontelli, Bernini)	4:36
<b>Total</b>	<b>16:32</b>

### GUIDE TO INTERIOR

9. Nave (Bregno, Bernini)	2:46
10. Domenico della Rovere Chapel (Bregno et. al.)	5:14
11. Cibo Chapel (Fontana et. al.)	2:20
12. Basso della Rovere Chapel (Pinturicchio et. al.)	2:35
13. Costa Chapel (Romano et. al.)	8:11
14. South Transept (Bernini et. al.)	2:01
<b>Total</b>	<b>23:07</b>

**Total** **58:32**

## DISC 2

### GUIDE TO INTERIOR, CONTINUED

1. Crossing & Dome (Bregno, Vanni)	3:05
2. High Altar & 13th C Icon (Bernini, “St. Luke”)	1:29
3. Retro-Choir & Apse (Pinturicchio, Bramante)	2:36
4. Della Rovere & Sforza Tombs (Sansovino)	4:19
5. Stained Glass Windows (de Marcillat)	2:00
6. Cerasi Chapel Background (Carracci, Caravaggio)	4:44
7. Cerasi Chapel, Caravaggio’s Conceptualization	2:51
8. Martyrdom of St. Peter (Caravaggio)	2:03
9. Conversion of St. Paul (Caravaggio)	3:51
10. Cerasi Chapel, Caravaggio’s Artistry	3:43
11. Mellini Chapel (Algardi, Monnot)	6:04
12. Chigi Chapel (Raphael)	6:11
13. Chigi Chapel (Bernini)	6:39
14. Maria Flaminia Odescalchi-Chigi Monument (Posi)	2:41
15. Baptistery (Bregno)	1:11
16. Tomb of G. B. Gisleni (Gisleni) & Goodbye	2:19
17. Addendum: Sacristy (Bregno)	2:10

**Total** **58:42**

## TIMELINE

1099	Nero’s grave exorcized; St. Mary chapel “of the People” built at site
1227	Gregory IX enlarges the chapel and consecrates it as a church
1420	Papacy returns to Rome from Avignon
1472 c.	Sixtus IV remands S.M. del Popolo to Augustinians; In rebuilding the church, Bregno introduces Lombard style to Rome
1473	Cardinal Rodrigo Borgia commissions high altar from Bregno
1484 c.	Pinturicchio begins decorating numerous private chapels
1501 c.	Julius II commissions Bramante to extend apse
1505	Julius II commissions tombs for Ascanio Sforza and Girolamo della Rovere; Sansovino creates first reclining effigies in Italian funerary sculpture
1508	Julius II commissions Pinturicchio to paint retro-choir vault
1509	Julius II commissions stained glass windows from de Marcillat
1511	Martin Luther visits Rome; Raphael begins work on Chigi chapel
1518	Vanozza Catanei, mother of four of Pope Alexander VI’s children, is buried in S.M. del Popolo
1520	Raphael dies on his 37th birthday
1563	Conclusion of Council of Trent sets off Counter-Reformation
1589	Fontana commissioned to raise obelisk in Piazza del Popolo
1600	Carracci and Caravaggio commissioned to decorate Cerasi chapel
1609	Carracci dies, aged 49
1610	Caravaggio dies, aged 37
1655	Alexander VII commissions Bernini to update interior of church and to decorate the Porta Flaminia to honor Queen Christina’s arrival; Gate is renamed Porta del Popolo
1771	Posi designs “the last Baroque tomb in Rome”
1824	Valadier completes his Piazza del Popolo urban renewal project

To help you keep your bearings, remember that the entrance is at the West end of the nave, so North is to your left as you enter. Our tour of the interior of Sta. Maria del Popolo will first take us up the South side aisle to the transept, then to the crossing and to the apse, and finally down the North side aisle — tarrying all along the way to consider the remarkable art and architecture, artistry and history.

Circled numbers refer to tracks on Disc 1

Squared numbers refer to tracks on Disc 2

